

ANALYSIS OF INSTALLING BALLAST WATER TREATMENT EQUIPMENT ON BULK CARRIERS

Diana Šateikienė¹, Jolanta Janutėnienė², Jonas Čerka³

^{1,3}Dept of Ship Engineering, Klaipėda University, Lithuania

²Dept of Mechanical Engineering, Klaipėda University, Lithuania

Submitted 11 January 2015; resubmitted 30 June 2015, 20 September 2015; accepted 13 December 2015; published online 29 March 2016

Abstract. In order to protect the world from the invasive species of organisms the cleaning ballast water is required, in other words, discharged water must meet requirements posted by the International Maritime Organization (IMO). The paper provides a comparative analysis of ballast water treatment equipment and its technical parameters. The research has been performed to analyse and assess the effect of the introduced equipment on ship stability, including the effect of its weight, dimensions, performance, price and the efficacy of choice.

Keywords: ship; seawater; ballast water treatment; treatment methods; technical characteristics of equipment.

Introduction

A ballast system of a vessel is one of the most important systems of the ship and is used for improving its marine stability. When ballast water procedures are performed on the ship, millions of various microorganisms are transported together with seawater used for ballast. The microorganisms discharged into water in an alien environment during de-ballasting have a damaging effect on the environment, human health and the ecosystem (Tang *et al.* 2009; Endresen *et al.* 2004; Drake, Lodge 2004).

The spread of invasive aquatic species and microorganisms from the ballast water of the ship is one of the most serious problems arising in the present environment of maritime shipping. During a conference held in 2004, the International Maritime Organization (IMO) adopted the BWM Convention *Control and Management of Ships Ballast Water and Sediments*, which is a prevention measure for the spread of invasive species – the adoption of D-1 (Ballast Water Exchange Standard) and D-2 (The Installation of Ballast Water Management Systems on the Ship) standards. The ships carrying on ballasting in the port of one country and de-ballasting in the port of another country are required to follow the D-2 standard of the BWM Convention (Pereira, Brinati 2012; Stehouwer *et al.* 2013).

A ballast water treatment system that employs active substances must comply with the resolution on

the procedure for using these materials adopted by the BWM Convention. The decision on whether there is a possibility of employing active substances is made by the IMO commission. The treatment system cannot pose undue risk to the environment, human health, property or resources (Zhang *et al.* 2013; Werschkun *et al.* 2012; Liu *et al.* 2014; Gollasch *et al.* 2007; IMO 2011).

The BWM Convention shall come into force after 12 months, when at least 30 IMO Member States, which constitutes 35% of the world trade shipping tonnage, ratify this convention.

This scientific work is aimed at determining technical parameters of ballast water treatment equipment that may influence the selection of ballast water treatment equipment for a bulk carrier.

The relevant problem (Tamburri *et al.* 2002; Maranda *et al.* 2013; Glosten 2011), introduced above, is being solved further in the current paper.

1. Ballast Water Treatment Technologies

Each ballast water treatment system differently carries out its cleaning function. Treatment equipment can be installed on a ship, or cleaning can be performed using treatment systems equipped onshore. At present, there are a great number of approved ballast water treatment methods. However, not all techniques are sufficiently effective. Therefore, manufacturers are looking for new solutions to ballast water treatment (RINA Services 2010).

The main ballast water treatment methods are mechanical, physical and chemical. As for the technologies of ballast water treatment, the total number of systems in the market reaches 70, 28 of which are the type system approved according to IMO and unofficially makes 35 in total.

Ballast water treatment equipment (usually) employs a combination of several methods. The primary treatment method is mechanical: filtering (19 certified methods), hydrocyclone (4 certified methods) etc., and, if necessary, second and third methods can be chemical (ozonation, chlorination, electrolysis, etc.) and physical (UV, deoxidation, etc.). After analysing data based on the information submitted by manufacturers, the distribution of the certified treatment equipment is shown in Fig. 1.

The selection of the treatment system and method depends on the type of a ship, technical parameters, performance indicators and other stages (Table 1) (Lloyd's Register 2015).

Table 1. The procedure for selecting a ballast water treatment system

<i>Initial key aspects</i>
Vessel type and characteristics
Trading pattern
Ballast capacity and flow rate requirements
<i>Technical and operational considerations</i>
Time required for treatment to be effective
Ballast and treatment pumping rates
Characteristics of the ballast system
Health and safety
In-service requirements
Explosion proof equipment
Power requirements and on-board systems
Effects on tank coating and corrosion considerations
Controls and alarms
Space constraints
<i>Treatment options</i>
Combination filtration and treatment
Chemical options, i.e. chlorination, ozone-deoxygenation and peracetic acid
Mechanical means, i.e. cavitation
UV irradiation
Ultrasonic
<i>Vendor selection and specification reviews</i>
Vendor experience of supplying similar systems
Equipment approval
Commercial considerations
<i>Installation planning</i>
At sea or dry docking considerations for the existing ships
Inclusion in build specifications for new builds

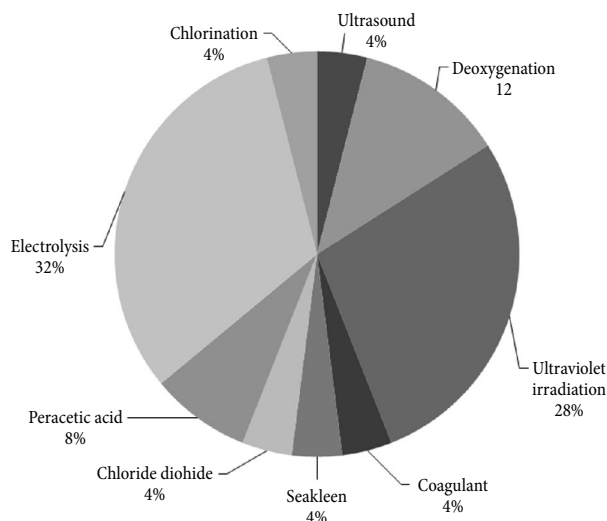


Fig. 1. The use of chemical and physical methods for ballast water treatment

In February 2004, the IMO adopted the International Convention for the *Control and Management of Ships Ballast Water and Sediments* (the Ballast Water Management or BWM Convention) to regulate discharges of ballast water and reduce the risk of introducing non-native species from the ballast water of ships. To complement the BWM Convention, the IMO adopted over 15 sets of guidelines and other documents contained in its resolutions and circulars of the Marine Environmental Protection Committee (MEPC) (Lloyd's Register 2015).

The BWM Convention will enter into force 12 months after ratification by 30 states thus representing 35% of the world's merchant shipping tonnage. Once the BWM Convention has entered into force, all ships will be required to manage their ballast water on every voyage by either exchanging or treating it using an approved ballast water treatment system (Lloyd's Register 2015).

The ballast water treatment system must be inexpensive, safe and compact, and the quality of cleaning must comply with the approved IMO standards.

The today's market represents many production companies offering a range of treatment equipment utilizing different methods. The selection of treatment equipment and the method depends on the type of the ship, time required to perform cleaning, weight, cost, operating cost and space for installing equipment on-board. Therefore, vessel owners in continually evolving shipping industry are faced with the problem of selecting the most suitable equipment and methods (Šateikienė, Janutėnienė 2012).

The research object of this paper is a bulk carrier vessel (type – Handy) and its main characteristics, which include the overall length – 89.9 m, width – 14.5 m and the capacity of the ballast water tank – 1676.5 m³.

Research has been performed to analyse and assess the effect of ballast water treatment equipment on the stability of the ship, including the effect of its weight, dimensions, performance, price and the efficacy of choice.

2. The Effect of Ballast Water Equipment on the Intact Stability of the Ship

The size and weight of equipment are significant factors in small vessels. In most cases, a small vessel will have limited space to add equipment and minimal tolerance to a growth in weight an increase in which may have an impact on the payload and stability of the vessel. The approach taken for evaluation in this category is to assign the best score of the system that occupies the smallest footprint and has the lowest weight (Glosten 2011).

The stability of the vessel must be checked before installing the ballast water treatment equipment, because ship designers do not evaluate additional time for designing equipment weight.

Stability is a ship’s ability to oppose external forces and return to an equilibrium position after the forces causing inclination stop affecting the ship. The stability of the vessel can be longitudinal and transverse. Longitudinal stability is measured by trim (longitudinal ship inclination) angle ψ and is quite large; thus, there is little or no risk of capsizing the ship forward or aft.

If the centre of ballast water treatment equipment is vertical, when passing through the centre of flotation, a mean change in the draft is (Fig. 2).

$$\delta d = \frac{P}{\rho \cdot g \cdot S}, \tag{1}$$

where: d – ship draft; δd – change in draft; P – weight of equipment; ρ – mass density of outboard seawater; g – the acceleration of gravity; S – waterline area (Molland 2008).

A change in transversal metacentric height after installing ballast water treatment equipment consists of changes in applying the buoyancy centre and gravity centre and a change in the metacentric radius (Table 2).

The initial stability of bulk carrier EVA is described in more detail by the coefficient of transverse stability rather than by metacentric height. This coefficient before loading goods is Δh_0 and after loading is:

$$(\Delta + P) \cdot (h_0 + \delta h) = \Delta h_0 - P \cdot \left(d + \frac{\delta d}{2} - z_p \right), \tag{2}$$

where: Δ – displacement; P – weight of equipment; h_0 – metacentric height; δh – change in metacentric height; z_p – vertical distance from the ship keel to centre of equipment.

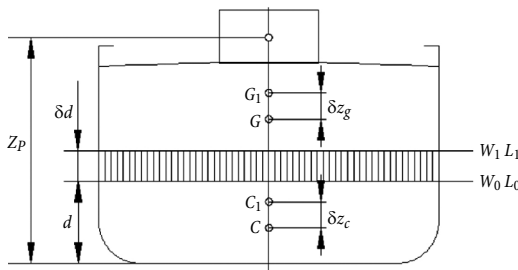


Fig. 2. The average change in the draught, the ship’s centre of gravity and the position of the buoyancy centre after installing ballast water treatment equipment

The height at which the ballast water treatment equipment is fitted without affecting metacentric height is equal to:

$$z_p \Big|_{\delta h=0} = d + \frac{\delta d}{2} - h_0. \tag{3}$$

A horizontal plane passing at this level is a marginal plane of metacentric height (Fig. 3). If the ballast water treatment equipment is installed below this plane, metacentric height will increase, and if it is above the plane – height will decrease.

Table 2. The assessment of transversal metacentric height

Change in transversal metacentric height	$\delta h = \delta z_c + \delta r + \delta z_g$
Change in the application of the buoyancy centre	$\delta z_c = \frac{P}{\Delta + P} \cdot \left(d + \frac{\delta d}{2} - z_c \right)$
Change in the metacentric radius	$\delta r = -\frac{P}{\Delta + P} \cdot r$
Change in the applicate of the ship’s centre of gravity	$\delta z_g = -\frac{P}{\Delta + P} \cdot (z_p - z_g)$

The coefficient of transverse stability describes the initial stability, because the feature of resisting the inclination of the ship depends on transversal metacentric height and ship’s water tank. A change in the size of this coefficient proportionally adjusts variations in ship stability: having installed equipment above critical plane z_p , the initial stability decreases and vice versa:

$$z_p \Big|_{\delta(\Delta h)=0} = d + \frac{\delta d}{2}. \tag{4}$$

After installing ballast water treatment equipment between both planes, one characteristic of stability (h) improves while the other (Δh) – deteriorates (Fig. 3). Ship stability is described in detail by parameter (Δh).

The displacement of the vessel varies by additionally installing the ballast water treatment equipment. A change in the coefficient of stability describes the absolute ability of the ship to resist inclination while a change in metacentric height reflects variation in this ability.

Under the requirements of the International Code on Intact Stability, a ship is safe under requirements, which presented in Table 3.

These requirements are raised for the ship intact stability scheme $l_0 = f(\theta)$ (Fig. 4).

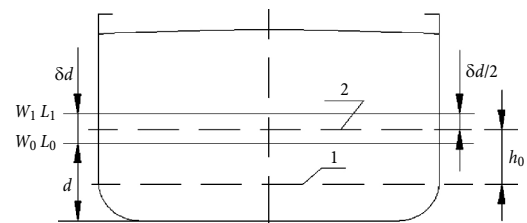


Fig. 3. The marginal plane of metacentric height (1) and the marginal plane of the coefficient of transversal stability (2)

Table 3. International Code on Intact Stability requirements for ship

Limit	Min/max
Area from 0.00 deg to 30.00 deg	>0.0550 m-R
Area from 0.00 deg to 40.00 deg or flood	>0.0900 m-R
Area from 30.00 deg to 40.00 deg or flood	>0.0300 m-R
Righting arm at 30.00 deg or MaxRA	>0.200 m
Angle from 0.00 deg to MaxRA	>25.00 deg
GM at equilibrium	>0.150 m

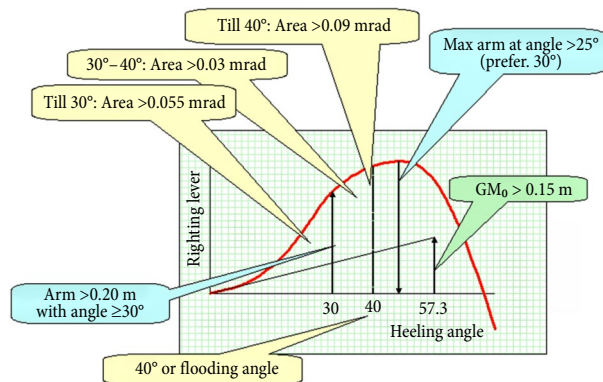


Fig. 4. Minimum IMO requirements for the ship intact stability scheme (International Code on Intact Stability)

The ship righting arm is calculated as:

$$l_{\theta} = y_c \cdot \cos \theta + (z_c - z_{c0}) \cdot \sin \theta - a \cdot \sin \theta, \quad (5)$$

where: l_{θ} – righting arm of the ship; y_c, z_c – transverse and vertical centre of buoyancy (heel angle θ); z_{c0} – vertical centre of buoyancy (heel angle $\theta \approx 0$); a – vertical distance from the centre of buoyancy to the centre of ship gravity; θ – angle of ship heel.

The numerical values of the shoulders of form stability decrease with an increase in the ship's displacement – when the ship is loaded (or additional equipment is installed), its stability will deteriorate (Fig. 5). The goods loaded below the ship's centre of gravity and the shoulders of ship stability δl_{sy} can compensate negative change δl_f in case only it is very slight.

If a ballast water treatment plant is installed high on the ship, the stability of the vessel will only get worse,

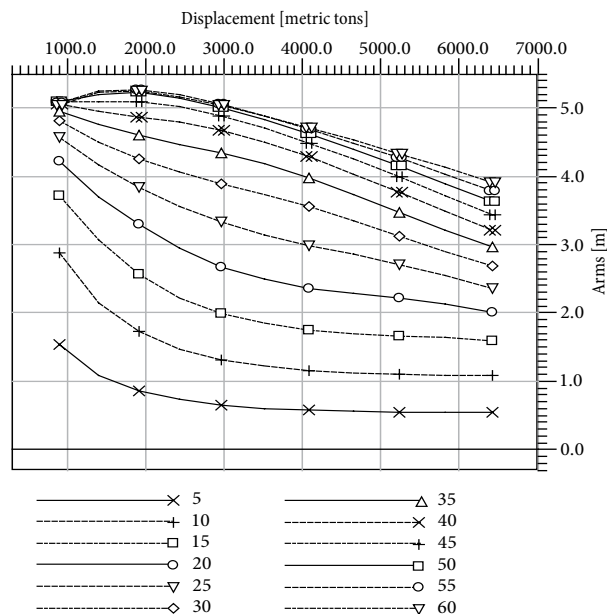


Fig. 5. A decrease in the stability of cross-curves when the displacement increases

and if the stability of the ship is near the allowed limit value before installing equipment, it is likely that this limit will be exceeded when installing equipment in any other location of the ship.

The mathematical experiment with vessel EVA revealed that the set requirements met the values of the following minimum Vertical Centre of Gravity (VCG) (Table 4).

The equipment installed at the highest (deck – 7500 mm) and lowest places (hold – 1051 mm) on-board has been measured. The mass of the equipment to ensure that a change in the ship's centre of gravity would be 0.5% of the allowable value of the centre of gravity (such precision is required in engineering calculations, then the impact is assessed), which is determined from the derived table, has been chosen (Table 5).

After installing equipment weighing 17.2 t in the hold of bulk carrier EVA and the ship's draught of 3 m, the change in the ship centre of gravity will be 0.036 m, which accounts for 0.5% of the permissible values of the ship centre of gravity. The selected equipment will have a minimal impact on the stability of the ship; it will be positive, and the stability of the ship will improve.

Table 4. Calculation results and the trim righting arm held at zero

Intact displacement [MT]	Intact draft at MS (m)	Max VCG [m]	Limit 1 [%]	Limit 2 [%]	Limit 3 [%]	Limit 4 [%]	Limit 5 [°]	Limit 6 [%]
2953.6	3.00	7.262	30.0	12.8	0.0	32.4	2.4	89.0
3501.7	3.50	6.856	8.6	14.1	43.3	58.3	5.8	0.0
4064.4	4.00	6.516	4.4	9.6	37.4	52.4	5.0	0.0
4639.5	4.50	6.210	12.1	1.8	0.1	24.8	2.9	64.4
5223.1	5.00	5.633	93.4	66.0	43.3	58.6	0.0	370.1
5813.7	5.50	4.853	220.7	180.3	152.9	142.0	0.0	851.9
6409.7	6.00	4.251	291.1	241.6	207.9	180.7	0.0	1244.4

Table 5. The effect of ballast water treatment equipment on the stability of the ship

Location of equipment installation	Draught of the ship [m]	Weight of the equipment [t]	Change in the ship centre of gravity δz_g [m]	Effect on ship stability
hold	3	17.2	-0.036	positive
hold	6	43	-0.021	positive
deck	3	525	0.036	negative
deck	6	43	0.021	negative

After increasing the weight of the ballast water treatment equipment to the maximum value of 43 t and the ship's draught to 6 m, the change in the ship centre of gravity will make 0.021 m, which accounts for 0.5% of the permissible values of the ship centre of gravity. The selected equipment will have a minimal impact on the stability of the ship; it will be positive, and the stability of the ship will improve.

The permissible value of the ship centre of gravity will change by 0.5% after installing equipment weighing 525 t on the ship deck under the ship's draught of 3 m. The selected equipment will have a minimal impact on the stability of the ship; it will be negative, and the stability of the ship will deteriorate.

The maximum value of the ship centre of gravity will change by 0.5% after installing equipment weighing 43 t on the deck of the ship and the ship's draught to 3 m. Stability will deteriorate.

The ballast water treatment equipment will be negative due to the stability of the ship depending on the draught of the ship: first, the ship's draught to 3 m and equipment weighing 43 t in the deck; then the ship's draught to 6 m and equipment weighing 525 t on the deck.

3. Dimensions of the Ballast Water Treatment Equipment

According to Lloyd's Register (<http://www.lr.org>), the footprint of the systems, as reported by manufacturers, varies between 0.25 m² and 30 m² for a 200 m³/h unit. As the classification society notes, while units may be predominantly modular, this does not imply that the footprint increases proportionately with flow capacity.

The analysis of the equipment employed by 17 suppliers has showed that when the capacity of ballast water treatment equipment is 200 m³/h, the equipment occupies an area from 1.6 to 25 m², and the average value is 5 m² (Fig. 6). The amount of other manufactured equipment having higher capacity is smaller. 13 systems with the capacity of 2000 m³/h occupy an area of 4 to 100 m², and the average is 25 m². Commonly, the ballast water treatment equipment is modular, but this does not mean that the area covered by the equipment increases in proportion with its capacity (yield). The height of the analysed ballast water treatment equipment ranged from 1 to 3 m.

The dimensions of the treatment equipment are those of the equipment assembled in operational ships. There are no anticipated places for installing treatment equipment in operational ships and the dimensions are limited by passages and installed equipment while transporting it to the selected place.

The installation of the ballast water treatment equipment on the ship has to take place in the machine section. As for bulk carrier EVA, ballast pumps are also installed in the machine section. Depending on the used ballast water treatment method and its efficiency, equipment dimensions are different. The ballast water treatment equipment can be modular and provided in various configurations, sizes and forms, depending on the available free area. The advantage of the equipment is that it can be assembled as separate units if there is no possibility of installing it all in one place.

The deadweight of bulk carrier EVA is 4300 tons. It has 15 different ballast tanks with a total volume of 1676.5 m³, and system capacity is 250 m³/h.

For selecting the filtration and UV irradiation modules of the ballast water treatment equipment designed for small and average (1000–10000 deadweight) ships, the treatment capacity of the equipment ranges from 250 to 1250 m³/h.

The universal capacity of EVA ballast pumps is $Q = 500$ m³/h and the ship has two pumps in the ballast system. Thus, the 'BWT 500i' module equipment of $D = 1000$ mm in length, $B = 1400$ mm in width (with pipe branch connection) and $H = 2400$ mm in height has been selected. The total area occupied by the equipment makes 3.36 m³.

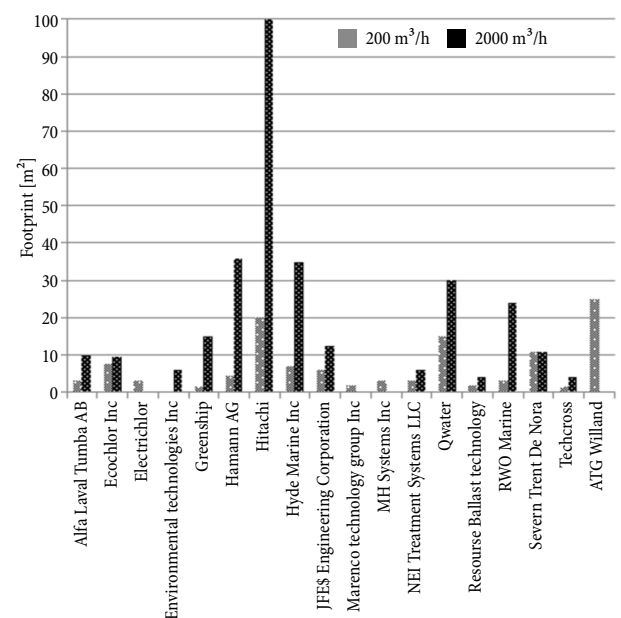


Fig. 6. The distribution of the footprint of ballast water treatment equipment

The analysis of the possibilities of installing the 'BWT 500i' module treatment system indicates that it is advisable and easy to assemble the equipment in the starboard area near ballast pumps. The height of the premises in the proposed location is 2.73 m, and therefore the equipment is installed between 22–25 beams.

4. Capacity of Ballast Water Treatment Equipment

Each ballast water treatment system is described by its capacity, which indicates how much the ballast water system can process per hour. For selecting the treatment system, this norm has to be sufficient enough to fill the ballast tank of the ship and to utilise the capacity of the used pumps.

Treatment Rated Capacity (TRC) is the maximum level of continuous capacity expressed in cubic meters per hour for which the Ballast Water Management System (BWMS) is the one of the approved type, which indicates the amount of ballast water that can be treated per unit of time established by the BWMS. The standard has been implemented by the D-2 Regulation of Convention. The treatment rated yield has to be sufficient enough to match the ballast capacity of the ship and a typical speed of ballast operations.

Treatment equipment capacity is the maximum amount of the treated ballast water per unit of time. For research on Bulk Carriers, a vessel (type – Handy, representative capacity of ballast water tanks – 1676.5 m³) was selected. Therefore, this parameter is important.

Where the ballast system has the capacity exceeding the TRC of an in-line BWMS, an appropriate flow control arrangement is to be provided for ballast pumps.

When a suction system uses centrifugal ballast pumps without the possibility of flow control, the initial yield through the ballast pump can exceed the default yield. The treatment system still has to be able to treat ballast water according to the approval of its type until the yield decreases to the maximum continuous yield.

In such cases, when the yield of the treatment system is indicated for one single ballast pump, a ballast water management plan includes particular instructions

stating that it is not allowed to use more than one ballast pump.

The analysis of the manufactured equipment shows that the majority of equipment is designed for approximately 250 m³/h yield (Table 6). It is considered that this yield is required for the first stage of ships that have to be equipped with the ballast water treatment technology. Since the systems are modular structures (except for the gas injection type), there are no technical limitations to the maximum yield, except those determined by the size and/or expense. One can also find pre-installed systems. Their yield exceeds 500 m³/h.

5. Price for Connecting the Ballast Water Treatment Equipment in Regards to Technical Characteristics

The main technical parameters of the system related with ballast water treatment are the yield, the total size of the system and expense that includes CApital EXpenditure (CAPEX) and OPerational EXpenditure (OPEX).

Approximate operational costs for 1000 m³ of treated water are shown in the diagram (13 systems) (Fig. 7).

Data analysis of 13 ballast water treatment systems shows that the average estimated operational costs are 10 cents per 1 m³ in US dollars. The operational costs of the majority of the analysed ballast water treatment equipment for 1 m³ of ballast water range from 1 to 35 cents.

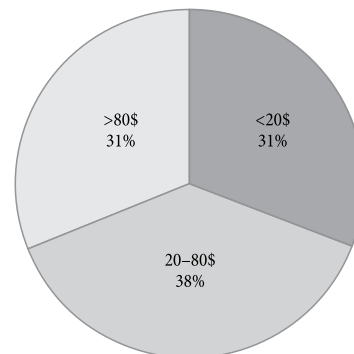


Fig. 7. The distribution of operational costs for ballast water treatment equipment

Table 6. The total number of ballast water management systems

BWMS capacity [m ³ /h]	BWMS					
	Ozone	Deoxygenation	Oxidation	UV irradiation	Flocculation	Chlorination
250	2	–	1	5	1	6
500	1	1	1	6	1	9
1000	1	1	1	6	1	9
2000	1	1	1	5	1	8
3000	1	1	1	5	–	7
4000	1	1	–	2	–	6
5000	1	1	–	2	–	6
6000	1	1	–	2	–	3
8000	1	–	–	–	–	1
10000	–	–	–	–	–	1

Table 7. The dependence of power requirements for ballast water treatment systems on capacity

Ballast water treatment method	Power requirements [kWh]		Capacity [m ³ /h]	
	500 m ³ system	5000 m ³ system	Min	Max
Filtration + UV irradiation + TiO ₂	34–64	260–500	250	3000
Electrolysis/Electrochlorination + Cavitation	16–22	165–220	200	5000
Filtration + UV irradiation	30–128	171–770	21	25000
Filtration + Ozonation + UV irradiation	45.6 - 62.4	456–582	75	3000
Electrolysis/Electrochlorination (ClO ₂)	4.2–6.6	11.9–33	250	16200
Hydrocyclone + Filtration + Electrolysis/Electrochlorination	15–20	–	50	3000
Filtration + Electrolysis/Electrochlorination + Ultrasonic treatment + Hydroxyl radical	8.5	85	50	9000
Filtration + Electrolysis/Electrochlorination + Residual chemical reduction)	13–30	76–330	75	8000
Filtration + Chlorination (NaClO) + Residual (chemical reduction)	6.2	13.4	200	4500
Filtration + Chlorination (Cl ₂ chlorine)	2.1	–	250	1500
Filtration + Electrolysis/Electrochlorination	17–48.4	175–568	100	7200

The analysis of their operational costs indicates that the costs do not directly depend on the ballast water treatment method (Table 7). In most cases (UV irradiation, electrolysis or ozonation), the costs directly depend on the power of the equipment, except for ballast water treatment equipment that has a gas injection mechanism or chemical storage.

Operational costs depend on power requirements for the ballast water treatment equipment. The analysis of requirements for their power indicates that power requirements do not directly depend on the capacity of ballast water treatment equipment.

Many suppliers keep CAPEX as confidential information. CAPEX on 11 ballast water treatment systems analysed using the capacity of 200 m³/h ranges from \$135000 to \$650000 each, and the average value is \$340000 (Fig. 8). The value of 8 systems having the

capacity of 2000 m³/h is \$250000 to \$2300000 each, and the average value is \$800000.

The analysis of CAPEX on the ballast water treatment equipment indicates that there is no direct dependence between the price of the equipment and the ballast water treatment method.

Conclusions

If ballast water treatment equipment is installed in small ships that have not been designed or built for it, it can influence the ships' stability. The application of mathematical modelling to bulk carrier EVA has disclosed that ship's stability would become worse if the weight of the ballast water treatment equipment was 42 tons and installed shipboard.

The ballast water treatment system installed in the ship can occupy an area of 1.6 to 100 m² depending on its capacity. Height ranges from 1 to 3 meters. The components of treatment equipment can be arranged separately if there is no place for the entire system. It is advisable and easy to assemble the treatment equipment in the starboard area of bulk carrier EVA near ballast pumps. The height of the premises in the proposed location is 2.73 m.

The capacity of ballast water treatment equipment ranges from 250 to 10000 m³/h, mostly from 250 to 2000 m³/h. EVA requires ballast water treatment equipment with the capacity of 1300 m³/h. The analysis of the capacity of the ballast water treatment equipment shows that, according to the capacity of the equipment, chlorination is available in the widest range.

The selection of the ballast water treatment equipment is defined by operational and CAPEX. The average operational cost of the analysed equipment is 10 cents per 1 m³ in US dollars. Expenses do not directly depend on the treatment method. The main factor influencing operational costs is equipment capacity. CAPEX varies from \$135000 to \$2300000 and directly depends on equipment capacity.

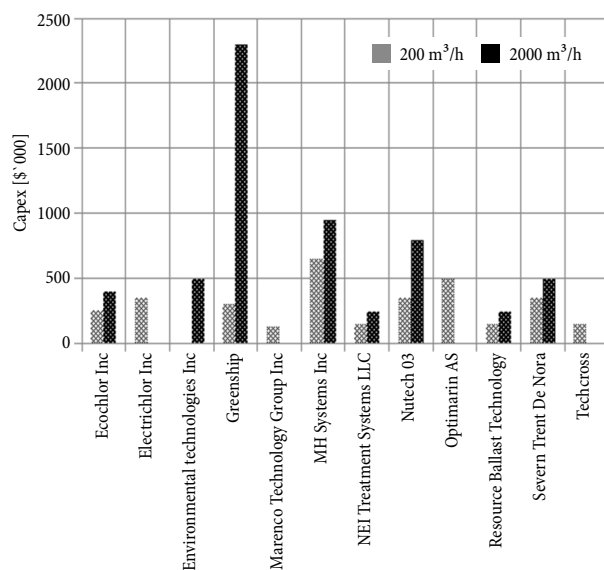


Fig. 8. The distribution of CAPEX on the ballast water treatment equipment

Acknowledgements

This work resulted from the Taiwan–Latvia–Lithuania Cooperation Project BALMAN ‘Development of the ships’ ballast water management system to reduce biological invasions’, project # TAPLLT-14-013 (for JJ and DS).

References

- Drake, J. M.; Lodge, D. M. 2004. Global hot spots of biological invasions: evaluating options for ballast–water management, *Proceedings of the Royal Society B: Biological Sciences* 271(1539): 575–580.
<http://dx.doi.org/10.1098/rspb.2003.2629>
- Endresen, Ø.; Behrens, H. L.; Brynstad, S.; Andersen, A. B.; Skjong, R. 2004. Challenges in global ballast water management, *Marine Pollution Bulletin* 48(7–8): 615–623.
<http://dx.doi.org/10.1016/j.marpolbul.2004.01.016>
- Glosten. 2011. *Ballast Water Treatment System Evaluation for Small Vessels*. Prepared for Isle Royale National Park, Houghton, MI. The Glosten Associates, Consulting Engineers Serving the Marine Community, US. 54 p.
- Gollasch, S.; David, M.; Voigt, M.; Dragsund, E.; Hewitt, C.; Fukuyo, Y. 2007. Critical review of the IMO international convention on the management of ships’ ballast water and sediments, *Harmful Algae* 6(4): 585–600.
<http://dx.doi.org/10.1016/j.hal.2006.12.009>
- IMO. 2008. *International Code on Intact Stability*. International Maritime Organization (IMO).
- Liu, T.-K.; Chang, C.-H.; Chou, M.-L. 2014. Management strategies to prevent the introduction of non-indigenous aquatic species in response to the ballast water convention in Taiwan, *Marine Policy* 44: 187–195.
<http://dx.doi.org/10.1016/j.marpol.2013.08.023>
- Lloyd’s Register. 2015. *Understanding Ballast Water Management: Guidance for Shipowners and Operators*. UK. 28 p.
- Maranda, L.; Cox, A. M.; Campbell, R. G.; Smith, D. C. 2013. Chlorine dioxide as a treatment for ballast water to control invasive species: Shipboard testing, *Marine Pollution Bulletin* 75(1–2): 76–89.
<http://dx.doi.org/10.1016/j.marpolbul.2013.08.002>
- Molland, A. F. 2008. *The Maritime Engineering Reference Book: a Guide to Ship Design, Construction and Operation*. Butterworth-Heinemann. 920 p.
- Pereira, N. N.; Brinati, H. L. 2012. Onshore ballast water treatment: a viable option for major ports, *Marine Pollution Bulletin* 64(11): 2296–2304.
<http://dx.doi.org/10.1016/j.marpolbul.2012.07.026>
- RINA Services. 2010. *Ballast Water Convention and Ballast Water Treatment Systems: Guidance on Procurement, Installation, Operation and Certification*. Technical Report. RINA Services S.p.A. Genova. Italy. 52 p.
- Stehouwer, P. P.; Van Slooten, C.; Peperzak, L. 2013. Microbial dynamics in acetate-enriched ballast water at different temperatures, *Ecotoxicology and Environmental Safety* 96: 93–98.
<http://dx.doi.org/10.1016/j.ecoenv.2013.06.027>
- Šateikienė, D.; Janutėnienė, J. 2012. Ballast water treatment technologies comparative analysis, in *Transport means 2012: Proceedings of the 16th International Conference*, 25–26 October 2012, Kaunas, Lithuania, 241–244.
- Tamburri, M. N.; Wasson, K.; Matsuda, M. 2002. Ballast water deoxygenation can prevent aquatic introductions while reducing ship corrosion, *Biological Conservation* 103(3): 331–341.
[http://dx.doi.org/10.1016/S0006-3207\(01\)00144-6](http://dx.doi.org/10.1016/S0006-3207(01)00144-6)
- Tang, Z.; Butkus, M. A.; Xie, Y. F. 2009. Enhanced performance of crumb rubber filtration for ballast water treatment, *Chemosphere* 74(10): 1396–1399.
<http://dx.doi.org/10.1016/j.chemosphere.2008.11.048>
- Werschkun, B.; Sommer, Y.; Banerji, S. 2012. Disinfection by-products in ballast water treatment: an evaluation of regulatory data, *Water Research* 46(12): 4884–4901.
<http://dx.doi.org/10.1016/j.watres.2012.05.034>
- Zhang, N.; Ma, B.; Li, J.; Zhang, Z. 2013. Factors affecting formation of chemical by-products during ballast water treatment based on an advanced oxidation process, *Chemical Engineering Journal* 231: 427–433.
<http://dx.doi.org/10.1016/j.cej.2013.07.055>