



THE METHOD FOR IMPROVING STABILITY OF CONSTRUCTION PROJECT SCHEDULES THROUGH BUFFER ALLOCATION

Piotr Jaśkowski¹, Sławomir Biruk²

*Lublin University of Technology, Faculty of Civil Engineering and Architecture,
Nadbystrzycka str. 40, 20-618 Lublin, Poland*

E-mails: ¹p.jaskowski@pollub.pl (corresponding author); ²s.biruk@pollub.pl

Received 25 August 2010; accepted 28 March 2011

Abstract. The actual completion time of construction projects is rarely in accordance with initial plans. This is due to unforeseen events that affect the project execution. In the paper, the authors propose a method of improving the construction schedule reliability. The method is based on the idea of buffers allocation, whose proper sizing helps to reduce negative effects of random conditions on the progress and efficiency of project activities. The authors adopt a proactive approach to the construction of robust schedules to cope with multiple disruptions during project execution, applicable to two processes starting policies (as soon as possible or no sooner than on a predefined date). The proposed method, based on simulation technique and mathematical programming, was illustrated by an example. The results obtained by means of the proposed method were compared, in terms of schedule stability, to those of the *float factor heuristic* and *starting time criticality heuristic* procedures. The method allowed reducing cost of deviations from the planned activity start dates in random conditions.

Keywords: construction project scheduling, stable solution, robust schedule, buffering, risk management, project management, mixed linear-integer programming.

Reference to this paper should be made as follows: Jaśkowski, P.; Biruk, S. 2011. The method for improving stability of construction project schedules through buffer allocation, *Technological and Economic Development of Economy* 17(3): 429–444.

JEL Classification: M11, C61, C63.

1. Introduction

A schedule is the basic tool used in construction project management. In the case of projects that involve non-cyclic, non-uniform and non-rhythmical processes, the most popular planning techniques are network methods. Among them, the critical path method is used most often,

though it does not allow the planner to account for all constraints that occur in the practice of construction operations, in terms of both market conditions and technical operations.

Over the past few years, research efforts in the field of construction project planning concentrated on exact and heuristic procedures for generating project schedules, usually under assumption of deterministic conditions. Most of them considered a variety of constraints and optimization objectives (e.g. Jaskowski, Biruk 2009; Kaplinski 2008a, 2008b; Jaskowski, Sobotka 2006; Christodoulou 2009; Liu, Wang 2008).

Nevertheless, construction processes are especially prone to risk, which affects project performance (Kaplinski, Janusz 2006; Karlowski, Paslawski 2008; Enshassi *et al.* 2009). Uncertainty has become one of the major factors affecting project execution and ultimate success (Ben-Haim, Laufer 1998). The risk in construction business is very high (Zavadskas *et al.* 2010). Risk comes from many sources during the whole project life cycle (Shevchenko *et al.* 2008; Manik *et al.* 2008). Therefore, the risk assessment problem (Zavadskas *et al.* 2010; Zhao, Jiang 2009; Miao *et al.* 2009), the problem of decision-making in risk environment (Peldschus 2008; Kahraman, Kaya 2010; Kapliński, Tamošaitienė 2010; Ginevičius, Zubrecovas 2009), and risk handling and allocation (e.g. Perera *et al.* 2009; Kheirkhah *et al.* 2009) attract the interest of numerous researchers and practitioners. Capturing the risk in the form of risk indices is reckoned to help the planner to shape judgments and to make decisions.

A contractor's project program expressed in the form of a schedule, regardless of the project development phase (bidding, organizing, managing on-site operations), is to be reliable in terms of not only the total project makespan, but also timing of particular tasks and activities – related with resource management. As a result of random events and conditions, a schedule that has been optimized for a set of particular objectives, but determined without consideration to disturbances that may occur, is likely to yield results significantly poorer than expected.

Project planning for uncertainty and risk has been the subject of numerous research efforts since introduction of the *PERT* model (e.g. Biruk, Jaskowski 2008; Błaszczuk, Nowak 2009; Kaplinski 2008a; Nassar, Casavant 2008). The existing methods that express activity durations as random values (e.g. *PERT*, *GANT*, *CYCLONE*, *Petri nets*) and simulation models (e.g. Klimov, Merkurjev 2008; Kaplinski 2009) focus mainly on estimating either the probability of conforming to the contractual completion date, or the project duration at a predefined confidence level. The problem of practical workflow planning is thus somehow neglected, as the methods mentioned above do not account for the problem of defining activity starts (other than “early starts”) and introducing subcontractors (or resource management in general). Moreover, the analysis of schedules obtained by means of the above methods provides information in the form of probabilistic values, which is not easy to interpret for practical planning of the project logistics.

Deficiencies of the existing methods gave rise to the worldwide search for more reliable methods of project planning, such as predictive (or proactive) scheduling that is expected to provide robust schedules (immune to disturbances), thus counteracting instability and “nervousness” of a project plan.

It is believed that a perfect schedule should combine solution robustness (i.e. it should be stable) and quality robustness (i.e. it should be makespan protective) (Van de Vonder *et*

al. 2005). Therefore, recent analyses aim at constructing robust baseline schedules. They are often proactive, which seems more effective than adoption of a purely reactive approach of rescheduling and updating the plan during execution. Paslawski (2008) proposed to improve the efficiency of the reactive approach by increasing flexibility of construction process engineering, based on creating multiple variants for process realization options, thus enabling adaptation to current realization conditions.

A construction project is characterized by a high number of project participants and multitude of contract relations (Schieg 2008). The main cause of the need for stable baseline schedules is the “advance booking” of key staff or equipment (to guarantee their availability) and fixed delivery dates required by suppliers or subcontractors (Herroelen, Leus 2004). Scheduling with fixed dates of employing resources makes planning easier – allows the contractor to manage project portfolio and restrict propagation of interferences from one project to the other. Furthermore, not keeping to the contract due date and milestones is usually connected with penalties.

A widely used method to increase stability of a schedule with a predefined due date is including time buffers between processes (Jaskowski, Biruk 2010).

2. Literature review

Buffering is a common practice in project management. Lill (2009) recommended buffer in form of buildings with no duration limits in construction programme as labour management compensators for improving the arrangement of labour resources. Buffers in form of idle periods guarantee the completion of an activity or a project on time. However, the existing methods of time buffer positioning and sizing are often criticized by the researchers.

Goldratt (1997) introduced three types of time buffers according to their function. The project buffer is placed at the end of the critical chain (the longest chain of precedence of resources dependent processes) to protect the project due date. Feeding buffers are inserted to protect the critical chain against disruptions from non-critical processes and placed at points where non-critical chains join the critical chain. Resource buffers alongside the critical chain should ensure resources availability. Critical chain scheduling, or buffer management (CC/BM), being the Goldratt’s Theory of Constraints application to project management, assumes that the baseline schedule should be created using median durations estimates of the processes. However, introduction of the project buffer may lead to unnecessarily late project due dates, and the feeding buffers fail to prevent propagation of schedule disruptions in most cases (Van de Vonder *et al.* 2005). Moreover, CC/BM approach does not provide the baseline schedule with fixed start times of processes. Instead, processes are to start as soon as possible.

In contrast to the above approach, the authors assume that, as the project runs, some or all processes are not allowed to start before their start time planned in the baseline schedule. This policy is called *railway scheduling*.

Some planners treat a contingency buffer as an integral part of each activity, without a clear distinction from the original duration estimate (Park, Peña-Mora 2004). This approach and positioning a buffer at the end of an activity may lead to a so called “student syndrome” – a situation when a contractor responsible for a particular task waits until the last possible

moment to start. Thus, a buffer does not protect an activity start date causing unnecessary interruptions in work flow. Therefore, some authors suggest placing time buffers in front of processes (Goldratt 1997; Park, Peña-Mora 2004; Herroelen, Leus 2004; Van de Vonder *et al.* 2008).

The size of a contingency buffer is normally decided on the basis of individual experience and assigned in a uniform way, usually as a fixed fraction of activity duration, instead of considering particular qualities of each individual activity (Park, Peña-Mora 2004). Two main factors should be taken into consideration while determining the size of the buffer in front of a process:

- the variability of all the processes that precede the process in the schedule (because it affects the probability that process can start at its scheduled starting time),
- and the weight or unit cost of process start time disruption.

The evaluation of quality of a buffered schedule is generally based on measures which are used to quantify the capacity of this schedule to remain efficient in random circumstances (Ghezail *et al.* 2009), but there are no generally agreed definitions or measures of robustness. Al-Fawzan, Haouari (2005) proposed to measure the schedule robustness with the total sum of free floats. This way, the robustness of the schedule was defined as the ability to execute the project without any delays in start of project's processes. Kobylanski, Kuchta (2007) state that a better measure of the schedule robustness would be the minimal free float. The planner's task should be thus maximizing the minimum of free floats. This way, start date of each activity would be protected (which means solution robustness) and the makespan of the whole project would be assured (which means quality robustness). This approach fuses solution and quality robustness. There is also no need to determine weights of makespan and robustness criteria like in a bi-objective model presented by Al-Fawzan, Haouari (2005). Robustness of a schedule can be measured also by the minimum of the free float to duration ratios calculated for all processes (Kobylanski, Kuchta 2007).

According to Herroelen, Leus (2004) and Van de Vonder *et al.* (2005 and 2006), a stable schedule with acceptable makespan performance should minimize the instability cost function, defined as the weighted sum of the expected absolute deviations between the predicted start times and the value that the random variable of start time will assume during schedule execution.

An optimization model of the buffer sizing problem (minimizing the instability cost), concerning the case of disruption to a single activity, with discrete disruption scenario, was presented by Herroelen, Leus (2004). However, in terms of computational effort, it is inefficient to search for exact optimal solutions of practical complex problems. Therefore, the literature on the subject proposes numerous heuristic and meta-heuristic algorithms for allocating buffers throughout the schedule but only adequate for the *railway policy* for starting all of the processes.

The *adapted float factor* and *resource flow dependent float factor* heuristic (Van de Vonder *et al.* 2005, 2006; Herroelen, Leus 2004) relies on the activity weights, but it does not exploit the information on the activity duration distributions for making its buffering decisions.

The concept of a float factor was introduced by Tavares *et al.* (1998) as a way of augmenting the earliest processes start time by the same fraction of the total float. This is to reduce the risk of not meeting project due date and to decrease the discounted project cost.

This procedure starts with an unbuffered schedule and modifies it by adding safety buffers in the front of processes. The start time of a process j is calculated as $s_j = s_j(U) + \alpha_j \cdot float_j$, where $s_j(U)$ denotes the earliest start of process j in the initial unbuffered schedule, α_j – the float factor, and $float_j$ – the total float of process j in the unbuffered schedule. The float factors are calculated as $\alpha_j = \beta_j / (\beta_j + \lambda_j)$, where β_j is the sum of the weight of activity j and the weights of all its transitive predecessors in the network, while λ_j is the sum of the weights of all transitive successors of activity j . The weights of activities that start at time 0 are not included in the above sums as it is assumed that these activities can always start at their planned start dates. Thus, there is no need of buffering to cope with possible disruptions of their predecessors.

The *virtual activity duration extension* heuristic (Van de Vonder *et al.* 2005, 2006; Herroelen, Leus 2004) relies on the standard deviations of the of the processes' durations, used to compute a modified duration for constructing the baseline schedule. The standard deviations are used at each iteration of the algorithm to select a non-dummy process for which virtual duration extensions is made. Duration extensions require schedule (early starting times) update and allow the planner to calculate buffer size in the baseline schedule with original expected activity durations. At every iteration step, the instability cost of the schedule is evaluated by simulation.

The *starting time criticality* heuristic (Van de Vonder *et al.* 2005, 2006; Herroelen, Leus 2004) tries to combine information on activity weights and activity duration variances. Based on an initial unbuffered schedule, intermediate schedules are created, in iterative way, by adding a one-unit time buffer in the front of the most critical activity until increasing contingency buffers no longer improves stability. The process criticality is measured by a multiplication of the probability of a process' not starting on its scheduled date and the unit cost of the process' deviating from its start time. This probability is estimated under assumption that only one activity at a time disturbs the start time of the process.

An extensive simulation-based analysis of the performance of heuristic and meta-heuristic algorithms of buffer allocation presented in (Van de Vonder *et al.* 2008) revealed that heuristics that use information on the unit cost of a process' start time deviation and process duration variability yield better solutions. Van de Vonder *et al.* (2008) present an improvement to the above heuristics based on searching better neighborhood solutions (their fitness is assessed by simulation technique), constructed by changing processes buffers sizes (in taboo search procedure) or starting times within displacement interval without affecting the starting times of other processes in the buffered or unbuffered schedule. This procedure reduces the instability cost by reallocating buffers and reducing floats. However, because of computational effort, it is adequate only for small test problems.

3. Proposed approach to buffer sizing

The precedence relationships between schedule activities, i.e. construction processes, have been modeled by a unigraph $G = \langle V, E \rangle$, directed, acyclic, in activity-on-the-node representation with single start and end nodes. $V = \{1, 2, \dots, n\}$ is a set of construction processes (nodes), $E \subset V \times V$ is a bi-argument relation representing precedence relationships between processes (arcs).

Each process is assigned a duration d_j , established using mean productivity estimates, equal to expected values of durations distributions. These duration estimates are used for creating the baseline schedule.

Each non-dummy process j has a weight c_j that denotes the unit cost of delaying its start, the delay being the difference between the actual and the start time assumed in the baseline schedule (nonnegative cost per unit time overrun on the start time of activity). A small activity weight reflects high scheduling flexibility or low instability cost. For example activities that depend on resources with non availability limits will be given a small weight. A heavy weight reflects small scheduling flexibility: deviations between actual and planned starting times are deemed very costly for the contractor, e.g. high penalties that are incurred when individual milestones or the project due date are not met (Herroelen, Leus 2004). The cost of the final dummy activity n denotes the cost of delaying the project completion beyond the predetermined (contractual) due date T_d . As the contract gave high importance to meeting the planned due date of the project, a large weight had to be given to the activity marking the project completion.

Processes whose $c_j > 0$ start in accordance with *railway policy* – not before the start date predefined in the baseline schedule. This policy can be applied also to the remaining processes.

The objective is to build a stable precedence feasible schedule with acceptable makespan performance by minimizing the function of schedule instability cost:

$$C = \sum_{j=1}^n c_j E(\mathbf{s}_j - s_j), \quad (1)$$

defined as the weighted sum of the expected shifts of the actual starting time \mathbf{s}_j from the predicted starting time s_j of the baseline schedule.

Buffers δ_j are introduced to prevent propagation of disruptions throughout the schedule. These buffers are idle periods (gaps) in the schedule between the planned start of a process considered and the latest planned finish of its predecessors (the earliest start of the process). The buffers can absorb disruptions in process durations without affecting other processes and the schedule logic. This way, coordination of resource and material procurement for each activity can be performed as smoothly as possible.

The buffer size should stay – in the opinion of the authors – in proportion to the process variability and to the cost of a possible delay beyond the earliest start in the baseline schedule.

To establish the possible delay it is necessary to perform simulations, especially in the case of different process starting policies used during project execution, such as the *railway* or as early as possible policy.

Buffer size is established in the following steps:

1. Calculation of the minimal project duration T_{\min} , the early start times of all activities, s_j^0 , and their total floats, $float_j^0$, according to the baseline schedule based on expected values of activity durations, d_j .

2. Simulations of the project progress on the basis of the network model assuming that activity durations are random variables of predefined probability distribution, and that the activities start in accordance with the assumed starting policy.

The simulation enables the planner to estimate expected values of activity delays $\Delta s_j = s_j^1 - s_j^0$, where s_j^1 is the mean start date of a process $j \in V$ calculated on the basis of simulation results.

Assuming that the contractual project duration is known and equals T_d , the total float of an activity $j \in V$ is $float_j = float_j^0 + T_d - T_{\min}$.

The existing floats in the baseline schedule, having the form of time buffers, should be allocated among processes according to process weights, w_j calculated according to the formula:

$$w_j = c_j \cdot (\Delta s_j + 3\sigma_j), \tag{2}$$

where σ_j is the standard deviation of the simulated activity start dates.

This approach to determining weights is similar to the process criticality concept presented by Kuchta (2000) and results from the fact that buffer sizes less than $\Delta s_j + 3\sigma_j$ do not eliminate propagation of disruption in the network.

3. Buffer sizes calculations. The mathematical model of the buffer δ_j sizing problem can be formulated as follows:

$$\max z = \min_{j \in H} \left\{ \frac{\delta_j}{float_j w_j} \right\}, \tag{3}$$

$$s_1 = 0, \tag{4}$$

$$s_j - \delta_j \geq s_i + d_i, \quad \forall (i, j) \in E, \tag{5}$$

$$s_n + d_n \leq T_d, \tag{6}$$

$$s_j \geq 0, \quad \forall j \in V, \tag{7}$$

$$\delta_j \geq 0, \quad \forall j \in V, \tag{8}$$

$$\delta_j = 0, \quad \forall j \in V \setminus H, \tag{9}$$

$$\delta_j \in \text{int}, \quad \forall j \in H, \tag{10}$$

where $H = \{j : w_j > 0\}$.

The objective function (3) is used for proper buffer sizing (float allocation) according to processes' weights. Execution of the first process of the project (i.e. a process that has no predecessors) starts at the moment 0 (4). The condition (5) is required to establish processes' start dates. The project should end before the predefined deterministic due date T_d (6).

To facilitate the computations a mixed linear-integer model can be constructed by modifying the objective function and adding one condition:

$$\max z = \xi, \tag{11}$$

$$\frac{\delta_j}{float_j} \geq w_j \xi, \quad \forall j \in H. \tag{12}$$

To solve this model, some widely available software can be used (e.g. Lp_Solve Open Source Mixed-Integer Linear Programming System, version 5.1.0.15, by Michel Berkelaar, Kjell Eikland, Peter Notebaert GNU LGPL).

Optimal solutions of the problem described above differ in buffer sizes of non-critical activities. The solution for which the sum of buffers is the least should be selected from the

set of all solutions. Thus, buffers of non-critical activities may be increased or decreased unless it raises the cost of schedule instability.

It is possible to improve the solution using the following procedure that should be run for non-critical activities of the same path between the project's start and end:

1. Find value of the schedule instability cost, C (1), on the basis of simulation using current schedule.
2. For each non-critical activity in the same path, find values C'_{j+} , C'_{j-} of instability cost function (1) on the basis of simulations of new schedules created by increasing or decreasing the buffer by a unit of time.
3. If there exists an activity whose $\Delta C_{j\pm} = C'_{j\pm} - C < 0$, go to step 4. In other case, finish the procedure and consider the current schedule to be the best.
4. Establish the number of the activity j^* for which ΔC_{j+} or ΔC_{j-} is minimal. Then change its buffer by a unit of time so to get maximum reduction of instability cost.
5. The resulting schedule is considered the current solution. Assume $C := C'_{j^*\pm}$ and go to step 2.

In the remainder of the paper, the above procedure is referred to as the improvement procedure.

4. Example

Figure 1 presents an example of a construction project network model. Table 1 lists the estimates of parameters of activity durations under assumption that probability distributions of these durations are triangular (a_j – the shortest possible duration, m_j – the most probable duration, b_j – the longest possible duration, d_j – the expected duration), and c_j – the unit costs of delaying the activities' start. Minimal project duration calculated on the basis of mean process durations is 75 days. The proposed method was used to find the project schedule of due date 80 days after start that fulfills a requirement of minimizing the expected cost of delaying the start of processes beyond their predicted (scheduled) start times.

The expected delay of each process and standard deviations was established by Monte Carlo simulation (30 000 runs). Simulations were conducted by means of GPSS World™ Personal Version by Minuteman Software (education license) for two variants of the project execution:

- in the first variant, all activities start according to the *railway policy*,
- in the second variant, only the activities $j \in H$ start no sooner than on the dates s_j^0 , defined in the baseline schedule, and the remaining activities start immediately after all their predecessors finish.

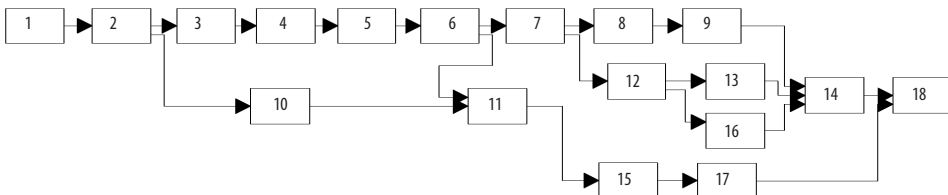


Fig. 1. Precedence relationships among processes of the example

Table 1. Estimates of processes durations and costs of start delaying (example)

<i>j</i>	Process	<i>a_j</i>	<i>m_j</i>	<i>b_j</i>	<i>d_j</i>	<i>c_j</i>
1	start	0	0	0	0	0
2	site preparation	5	6	8	6	0
3	excavations	4	5	7	5	7
4	foundation	8	10	15	11	0
5	basement walls	3	4	7	5	5
6	basement floor slab	3	4	7	5	0
7	brickwork	15	18	25	19	0
8	roof structure	7	8	10	8	0
9	roof cladding	5	6	8	6	6
10	external services	2	3	4	3	0
11	backfill	1	2	4	2	5
12	partition walls	3	5	8	5	0
13	plastering	8	10	15	11	0
14	painting	5	6	9	7	0
15	facade works	10	12	18	13	9
16	plumbing	10	12	15	12	0
17	site works	14	16	22	17	0
18	finish	0	0	0	0	10

Table 2. Results of calculations by the proposed method – the first variant

<i>j</i>	<i>s_j⁰</i> [days]	<i>s_j¹</i> [days]	Δs_j [days]	σ_j [days]	<i>w_j</i>	<i>float_j</i> [days]	δ_j [days]	
							Proposed method without improvement procedure	Proposed method with improvement procedure
1	0	0	0	0	0	0	0	0
2	0	0	0	0	0	5	0	0
3	6	6.4192	0.4192	0.5714	14.9351	5	1	1
4	11	11.8004	0.8004	0.8146	0	5	0	0
5	22	23.1165	1.1165	1.3333	25.5818	5	1	1
6	27	28.0487	1.0487	1.3391	0	5	0	0
7	32	32.9997	0.9997	1.3401	0	5	0	0
8	51	52.7565	1.7565	2.0191	0	8	0	0
9	59	61.1249	2.1249	2.0952	50.4624	8	3	3
10	6	6.4192	0.4192	0.5714	0	39	0	0
11	32	32.9997	0.9997	1.3401	25.1000	16	3	4
12	51	52.7565	1.7565	2.0191	0	5	0	0
13	56	58.2034	2.2034	2.1632	0	6	0	0
14	68	70.8522	2.8522	2.3372	0	5	0	0
15	34	35.3795	1.3795	1.4591	51.8100	16	5	2

Continued Table 2

j	s_j^0 [days]	s_j^1 [days]	Δs_j [days]	σ_j [days]	w_j	float _j [days]	δ_j [days]	
							Proposed method without improvement procedure	Proposed method with improvement procedure
16	56	58.2034	2.2034	2.1632	0	5	0	0
17	47	48.9383	1.9383	1.9910	0	16	0	0
18	75	77.5163	2.5163	2.5039	100.2802	5	3	3

Buffer sizes were found by solving the model given by equations (4)–(10) and (11)–(12) by means of Lp_solve software. Then the procedure of improving the solution was applied. The results of calculations are presented in Table 2 (first variant) and Table 3 (second variant). A bar chart of the buffered schedules is presented in Figs 2 and 3.

Table 3. Results of calculations by the proposed method – the second variant

j	s_j^0 [days]	s_j^1 [days]	Δs_j [days]	σ_j [days]	w_j	float _j [days]	δ_j [days]	
							Proposed method without improvement procedure	Proposed method with improvement procedure
1	0	0	0	0	0	0	0	0
2	0	0	0	0	0	5	0	0
3	6	6.4161	0.4161	0.5706	11.9836	5	1	1
4	11	11.7448	0.7448	0.8905	0	5	0	0
5	22	23.0967	1.0967	1.3274	21.9914	5	1	1
6	27	27.7578	0.7578	1.6161	0	5	0	0
7	32	32.4317	0.4317	1.8518	0	5	0	0
8	51	51.7601	0.7601	2.8104	0	8	0	0
9	59	60.7630	1.7630	2.1450	41.2008	8	2	3
10	6	6.3319	0.3319	0.6877	0	39	0	0
11	32	32.9397	0.9397	1.3485	29.0428	16	3	5
12	51	51.7601	0.7601	2.8104	0	5	0	0
13	56	57.1001	1.1001	3.0191	0	6	0	0
14	68	69.8101	1.8101	3.0274	0	5	0	0
15	34	35.3235	1.3235	1.4640	49.4291	16	5	2
16	56	57.1001	1.1001	3.0191	0	5	0	0
17	47	48.6524	1.6524	2.2773	0	16	0	0
18	75	76.4748	1.4748	3.1590	105.7705	5	3	3

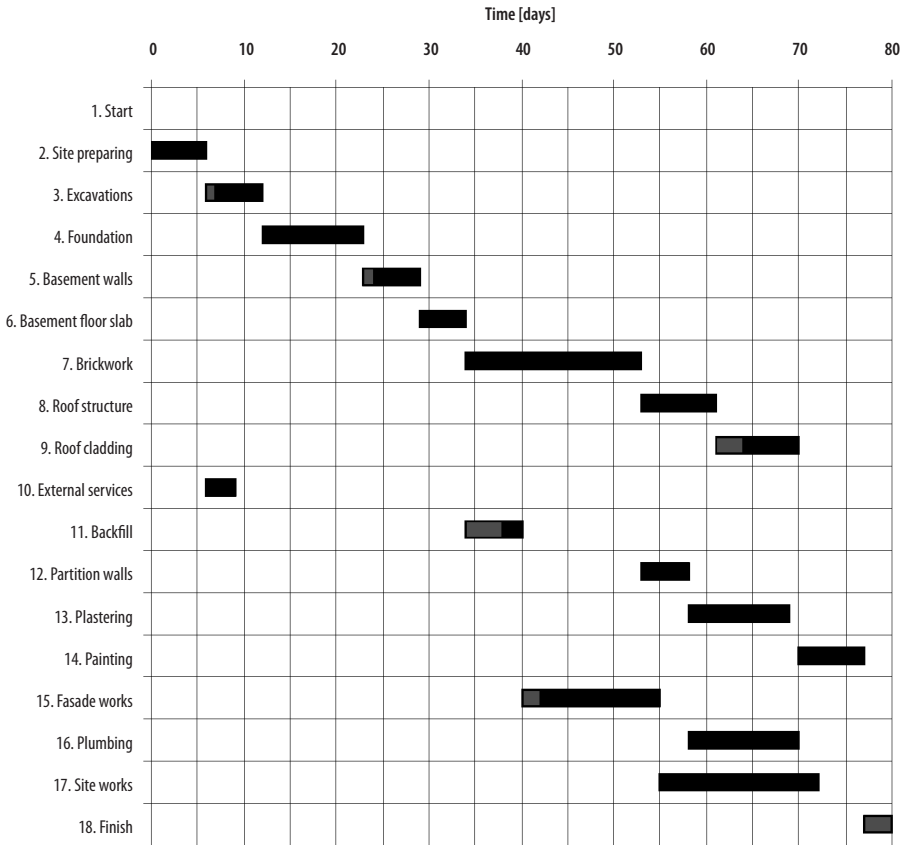


Fig. 2. Project schedule with buffers sizes obtained using the proposed method and the improvement procedure – the first variant; gray bars represent buffers in front of processes

Buffer sizes calculated using the *adapted float factor heuristic* are as follows: $\delta_3 = 1$, $\delta_5 = 0$, $\delta_9 = 4$, $\delta_{11} = 7$, $\delta_{15} = 5$, $\delta_{18} = 3$, $\delta_j = 0 \forall j \in V \setminus H$. Using the *starting time criticality heuristic*, following buffer sizes were obtained: $\delta_3 = 1$, $\delta_5 = 1$, $\delta_9 = 3$, $\delta_{11} = 3$, $\delta_{15} = 2$, $\delta_{18} = 3$, $\delta_j = 0 \forall j \in V \setminus H$.

Table 4 lists values of the instability cost function, established by simulation, of schedules with buffer sizes calculated by means of the proposed method, the *adapted float factor*, and *starting time criticality heuristics*. Application of all these procedures significantly improves the stability of the schedule – the instability cost is over four times lower than in the unbuffered schedule. The solution obtained by means of the proposed method with improvement procedure is better than solutions obtained by the *starting time criticality heuristic* (most widely presented in the literature).

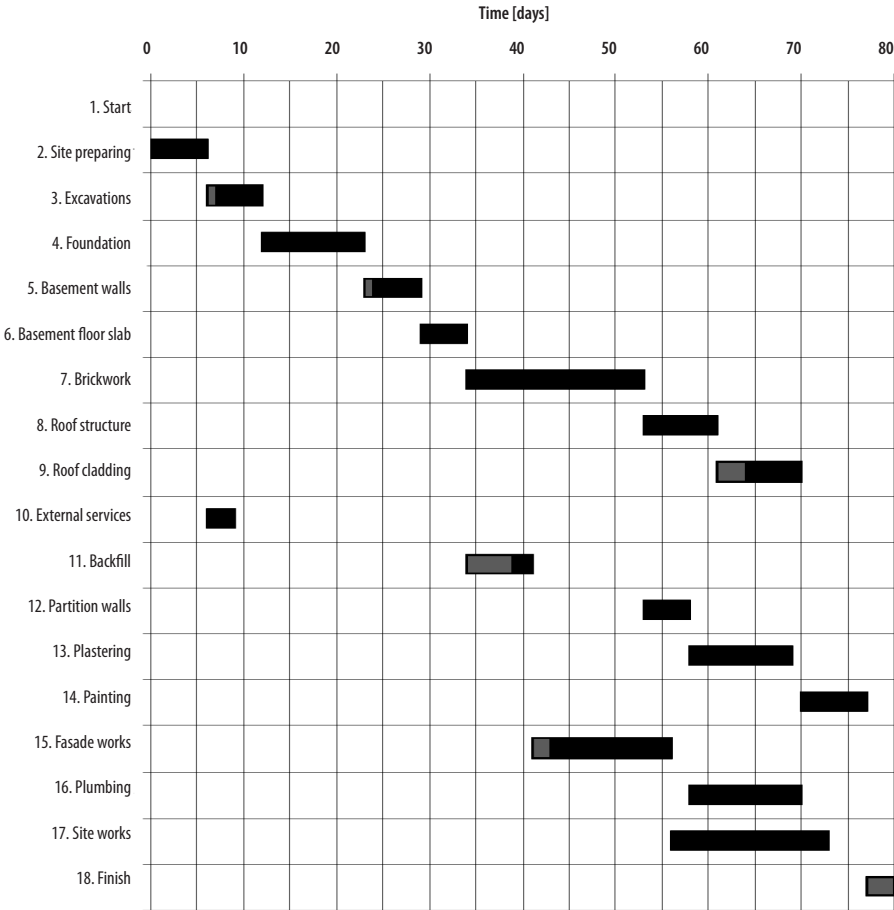


Fig. 3. Project schedule with buffers sizes obtained using the proposed method and the improvement procedure – the second variant; gray bars represent buffers in front of processes

5. Conclusions

A stable baseline schedule is crucial for the success of construction projects. Changes to the program introduced in reaction to process duration disruptions result in difficulties with managing subcontractors and suppliers. Furthermore, not keeping to the contract due date and milestones is usually connected with penalties.

Instability of the schedule may seriously affect continuity of works, labor and delivery cost, management effort, etc. Proper buffer sizing and placement enables the planner to protect the project against disruptions that occur during execution and to minimize the cost of not keeping to the baseline. The scale of the schedule instability cost is affected also by the policy of starting the processes: the *railway policy* is related with greater cost, while the possibility to start activities as soon as their predecessors finish reduces the possibility of delaying the activities to follow.

The proposed method seems better than simple heuristics that do not allow for the probabilistic nature of process duration and are applicable only in the case of the *railway policy*. The float distribution rule employed by the proposed approach considers both duration variability and propagation of disruptions in the network. As the example illustrates, the method provides results similar in their quality to the results of the best known heuristic procedures. Its considerable advantage is the possibility to analyze resource constraints and to improve resource allocation (i.e. to change the resource allocation adopted in the baseline schedule). In contrast, methods presented in the literature on the subject consider only buffer allocation in baseline schedules and provide resource constraints feasible solutions while maintaining the initial resource flow. The proposed improvement procedure has the potential of providing solutions superior to those obtained by the existing heuristics.

Table 4. Comparison of schedule (solution) robustness obtained using different methods

Method used to buffer sizing	Instability cost	
	<i>Railway policy for all activity starts (first variant)</i>	<i>Railway policy only for activities $j \in H$ (second variant)</i>
Proposed method with improvement procedure	10.42	8.33
Proposed method without improvement procedure	10.65	9.84
<i>Adapted float factor heuristic</i>	12.57	11.47
Starting time criticality heuristic	10.52	8.42
Unbuffered schedule	41.50	38.11

Acknowledgements

The work was financed by the Polish Ministry of Science and Higher Education (grant no. N N506 254637).

References

- Al-Fawzan, M. A.; Hiauari, M. 2005. A bi-objective model for robust resource-constrained project scheduling, *International Journal of Production Economics* 96(2): 175–187. doi:10.1016/j.ijpe.2004.04.002
- Ben-Haim, Y.; Laufer, O. 1998. Robust reliability of projects with activity-duration uncertainty, *Journal of Construction Engineering and Management ASCE* 124(2): 125–132. doi:10.1061/(ASCE)0733-9364(1998)124:2(125)
- Biruk, S.; Jaskowski, P. 2008. Simulation modelling construction project with repetitive tasks using Petri nets theory, *Journal of Business Economics and Management* 9(3): 219–226. doi:10.3846/1611-1699.2008.9.219-226
- Błaszczuk, T.; Nowak, M. 2009. The time-cost trade-off analysis in construction project using computer simulation and interactive procedure, *Technological and Economic Development of Economy* 15(4): 523–539. doi:10.3846/1392-8619.2009.15.523-539
- Christodoulou, S. 2009. Construction imitating ants: Resource-unconstrained scheduling with artificial ants, *Automation in Construction* 18(3): 285–293. doi:10.1016/j.autcon.2008.09.005

- Enshassi, A.; Mohamed, S.; Abushaban, S. 2009. Factors affecting the performance of construction projects in the Gaza Strip, *Journal of Civil Engineering and Management* 15(3): 269–280. doi:10.3846/1392-3730.2009.15.269-280
- Ghezail, F.; Pierreval, H.; Hajri-Gabouj, S. 2009. Analysis of robustness in proactive scheduling: A graphical approach, *Computers and Industrial Engineering* 58(2): 193–198. doi:10.1016/j.cie.2009.03.004
- Ginevičius, R.; Zubrecovas, V. 2009. Selection of the optimal real estate investment project basing on multiple criteria evaluation using stochastic dimensions, *Journal of Business Economics and Management* 10(3): 261–270. doi:10.3846/1611-1699.2009.10.261-270
- Goldratt, E. 1997. *Critical Chain*. The North River Press Publishing Corporation, Great Barrington, MA.
- Herroelen, W.; Leus, R. 2004. The construction of stable project baseline schedules, *European Journal of Operational Research* 156(3): 550–565. doi:10.1016/S0377-2217(03)00130-9
- Jaskowski, P.; Sobotka, A. 2006. Scheduling construction projects using evolutionary algorithm, *Journal of Construction Engineering and Management ASCE* 132(8): 861–870. doi:10.1061/(ASCE)0733-9364(2006)132:8(861)
- Jaskowski, P.; Biruk, S. 2009. The work continuity constraints problem in construction projects' network models, *Archives of Civil Engineering* 55(1): 29–41.
- Jaskowski, P.; Biruk, S. 2010. Buffer sizing method for constructing stable schedules of time-limited projects, in *Selected papers of the 10th International Conference on Modern Building Materials, Structures and Techniques*, Vilnius, Lithuania, May 19–21, 2010, 419–424.
- Kahraman, C.; Kaya, İ. 2010. Investment analyses using fuzzy probability concept, *Technological and Economic Development of Economy* 16(1): 43–57. doi:10.3846/tede.2010.03
- Kaplinski, O.; Janusz, L. 2006. Three phases of multifactor modelling of construction processes, *Journal of Civil Engineering and Management* 12(2): 127–134.
- Kaplinski, O. 2008a. Planning instruments in construction management, *Technological and Economic Development of Economy* 14(4): 449–451. doi:10.3846/1392-8619.2008.14.449-451
- Kaplinski, O. 2008b. Development and usefulness of planning techniques and decision-making foundations on the example of construction enterprises in Poland, *Technological and Economic Development of Economy* 14(4): 492–502. doi:10.3846/1392-8619.2008.14.492-502
- Kapliński, O.; Tamošaitienė, J. 2010. Game theory applications in construction engineering and management, *Technological and Economic Development of Economy* 16(2): 348–363. doi:10.3846/tede.2010.22
- Kaplinski, O. 2009. Information technology in the development of the Polish construction industry, *Technological and Economic Development of Economy* 15(3): 437–452. doi:10.3846/1392-8619.2009.15.437-452
- Karłowski, A.; Pasławski, J. 2008. Monitoring of construction processes in the variable environment, *Technological and Economic Development of Economy* 14(4): 503–517. doi:10.3846/1392-8619.2008.14.503-517
- Kheirkhah, A. S.; Esmailzadeh, A.; Ghazinoory, S. 2009. Developing strategies to reduce the risk of hazardous materials transportation in Iran using the method of fuzzy SWOT analysis, *Transport* 24(4): 325–332. doi:10.3846/1648-4142.2009.24.325-332
- Kobylanski, P.; Kuchta, D. 2007. A note on the paper by M. A. Al-Fawzan and M. Haouari about bi-objective problem for robust resource-constrained project scheduling, *International Journal of Production Economics* 107(2): 496–501. doi:10.1016/j.ijpe.2006.07.012
- Kuchta, D. 2000. Use of fuzzy numbers in project risk (criticality) assessment, *International Journal of Project Management* 19(5): 305–310. doi:10.1016/S0263-7863(00)00022-3
- Lill, I. 2009. Multiskilling in construction – a strategy for stable employment, *Technological and Economic Development of Economy* 15(4): 540–560. doi:10.3846/1392-8619.2009.15.540-560
- Liu, S. S.; Wang, Ch. J. 2008. Resource-constrained construction project scheduling model for profit maximization considering cash flow, *Automation in Construction* 17(8): 966–974. doi:10.1016/j.autcon.2008.04.006

- Manik, A.; Gopalakrishnan, K.; Singh, A.; Yan, S. 2008. Neural networks surrogate models for simulating payment risk in pavement construction, *Journal of Civil Engineering and Management* 14(4): 235–240. doi:10.3846/1392-3730.2008.14.22
- Miao, X.; Yu, B.; Xi, B. 2009. The uncertainty evaluation method of supply chain reliability, *Transport* 24(4): 296–300. doi:10.3846/1648-4142.2009.24.296-300
- Nassar, K.; Casavant, A. 2008. Analysis of timed Petri nets for reachability in construction applications, *Journal of Civil Engineering and Management* 14(3): 189–198. doi:10.3846/1392-3730.2008.14.16
- Park, M.; Peña-Mora, F. 2004. Reliability buffering for construction projects, *Journal of Construction Engineering and Management ASCE* 130(5): 626–637. doi:10.1061/(ASCE)0733-9364(2004)130:5(626)
- Paslawski, J. 2008. Flexibility approach in construction process engineering, *Technological and Economic Development of Economy* 14(4): 518–530. doi:10.3846/1392-8619.2008.14.518-530
- Peldschus, F. 2008. Experience of the game theory application in construction management, *Technological and Economic Development of Economy* 14(4): 531–545. doi:10.3846/1392-8619.2008.14.531-545
- Perera, B. A. K. S.; Dhanasinghe, I.; Rameezdeen, R. 2009. Risk management in road construction: the case of Sri Lanka, *International Journal of Strategic Property Management* 13: 87–102. doi:10.3846/1648-715X.2009.13.87-102
- Schieg, M. 2008. Strategies for avoiding asymmetric information in construction project management, *Journal of Business Economics and Management* 9(1): 47–51. doi:10.3846/1611-1699.2008.9.47-51
- Shevchenko, G.; Ustinovichius, L.; Andruškevičius, A. 2008. Multi-attribute analysis of investments risk alternatives in construction, *Technological and Economic Development of Economy* 14(3): 428–443. doi:10.3846/1392-8619.2008.14.428-443
- Tavares, L. V.; Ferreira, J. A. A.; Coelho, J. S. 1998. On the optimal management of project risk, *European Journal of Operational Research* 107(2): 451–469. doi:10.1016/S0377-2217(97)00344-5
- Van de Vonder, S.; Demeulemeester, E.; Herroelen, W. 2008. Proactive heuristic procedures for robust project scheduling: An experimental analysis, *European Journal of Operational Research* 189(3): 723–733. doi:10.1016/j.ejor.2006.10.061
- Van de Vonder, S.; Demeulemeester, E.; Leus, R.; Herroelen, W. 2006. The trade-off between stability and makespan in resource-constrained project scheduling, *International Journal of Production Research* 44(2): 215–236. doi:10.1080/00207540500140914
- Van de Vonder, S.; Demeulemeester, E.; Leus, R.; Herroelen, W. 2005. The use buffers in project management: The trade-off between stability and makespan, *International Journal of Production Economics* 97(2): 227–240. doi:10.1016/j.ijpe.2004.08.004
- Zavadskas, E. K.; Turskis, Z.; Tamošaitienė, J. 2010. Risk assessment of construction projects, *Journal of Civil Engineering and Management* 16(1): 33–46. doi:10.3846/jcem.2010.03
- Zhao, L. D.; Jiang, Y. P. 2009. A game theoretic optimization model between project risk set and measure set, *International Journal of Information Technology and Decision Making* 8(4): 769–786. doi:10.1142/S0219622009003697

STATYBOS VYKDYMO GRAFIKO STABILUMO UŽTIKRINIMAS PASKIRSTANT LAIKO REZERVUS

P. Jaśkowski, S. Biruk

Santrauka. Tikrasis statybos projektų baigimo laikas retai atitinka pradinis užsibrėžtus planus. Taip yra dėl nenumatytų atvejų, kurie daro įtaką galutiniam projekto baigimo laikui. Šiame straipsnyje autoriai pristato metodą, kuris pagerina statybos grafikų patikimumą. Jis grindžiamas laiko rezervo paskirstymo idėja, padedančia sumažinti neigiamus atsitiktinių trikdžių poveikius vykdamas projektą. Autoriai pritaiko

veiksmingą būdą, kuris leidžia išvengti daugelio sutrikimų vykdant projektą. Siūlomas metodas pagrįstas modeliavimu ir matematinio programavimu, darbe pateiktas jo taikymo pavyzdys. Gauti rezultatai, taikant siūlomą metodą, buvo lyginami įvairiais požiūriais. Metodas leidžia sumažinti išlaidas, kai atsitiktinėmis sąlygomis nukrypstama nuo planuojamų terminų.

Reikšminiai žodžiai: statybos vykdymo grafikas, tvarus sprendimas, patikimas grafikas, rezervas, rizikos valdymas, projektų valdymas, tiesinis programavimas.

Piotr JAŚKOWSKI. Ph. Dr at Lublin University of Technology, Poland. He is a Head of the Group of Construction and Investments Processes Engineering working in the Building Institute. He is a member of the Section of the Engineering of Construction Projects in Civil Engineering Committee of Polish Academy of Science. He is the member of EURO Working Group “OR in Sustainable Development and Civil Engineering” and International Group on Reliability. His research interests include the organization and modeling of construction processes, construction projects scheduling, and optimization techniques.

Sławomir BIRUK. Ph. Dr at Lublin University of Technology, Poland. He is the member of EURO Working Group “OR in Sustainable Development and Civil Engineering” and International Group on Reliability. His research interests include the organization and modeling of construction processes, construction projects scheduling, optimization techniques, simulation modeling, construction methods and equipment.